



engineers | architects | contractors

SOLUTIONS TODAY WITH
A VISION FOR TOMORROW

July 15, 2013

Gregory Charles
Municipal Solid Waste Permits Section
Waste Permits Division
Texas Commission on Environmental Quality
12100 Park 35 Circle
Austin, Texas 78523



RE: Request for Permit Modification
Municipal Solid Waste - Angelina County
Angelina County Waste Management Center- MSW Permit No. 2105A
CN600833511; RN101947323

Dear Mr. Charles:

In accordance with §305.70(l) and on behalf of Angelina County Waste Management Center, we hereby request a permit modification to the above referenced permit. The purpose of this permit modification is to revise the Site Development Plan (SDP), Attachment 12, Final Closure Plan to allow for an alternative final cover design over the Pre-Subtitle D areas to accommodate landfill gas header lines installed on top of intermediate cover.

In March 2011, the TCEQ approved a modification to Permit No. 2105A to allow an alternative final cover system over Subtitle D Areas and to lower the final contour elevations (Exhibit 4.5 - Final Contour Map) over the Subtitle D Areas to accommodate the alternative final cover. The modification was completed because of a significant soil deficiency at the site. Since the time of that modification, the County has acquired additional property near the site for use as a borrow source and now has sufficient soil for construction of either traditional final cover systems with 18" clay infiltration layers or the alternative cover systems with thicker erosions layer to achieve permitted contours.

Therefore, this permit modification also requests to change the final contours and final slopes without increasing the maximum permitted height. There will be no capacity increase over the currently permitted maximum capacity. Final contour elevations will be as shown on the Final Contour Map regardless of which final cover system is installed. Where the alternative final cover system with the geosynthetic liner (GLC) is installed, additional erosion layer soil will be added to meet final contour grades.

The following pages of Part III – Site Development Plan, Attachment 12 - Final Closure Plan have been revised and/or added:

1. Cover Page
2. Table of Contents
3. Pages 1 through 5
4. Exhibits 4.2.1 and 4.3.1 (Typical Alternative Final Cover Details)
5. Exhibit 4.5 (Final Contour Map)
6. Appendix 5.3 – Alternative Final Cover Demonstration
7. Appendix 5.4 – Final Cover System Quality Control Plan; Cover Page, Table of Contents, and Pages 1 and 29.

Mr. Gregory Charles
July 15, 2013

Page 2

An original plus three (3) copies of this modification request with revised permit application pages and redline/strikeout copy of revised pages. If you have any questions regarding this permit modification or require any additional information, please feel free to contact me at (361) 883-1984.

Sincerely,

A handwritten signature in black ink that reads "Amy R. Hesseltine". The signature is written in a cursive style with a large initial "A".

Amy R. Hesseltine, P.E.
Project Manager

Enclosures

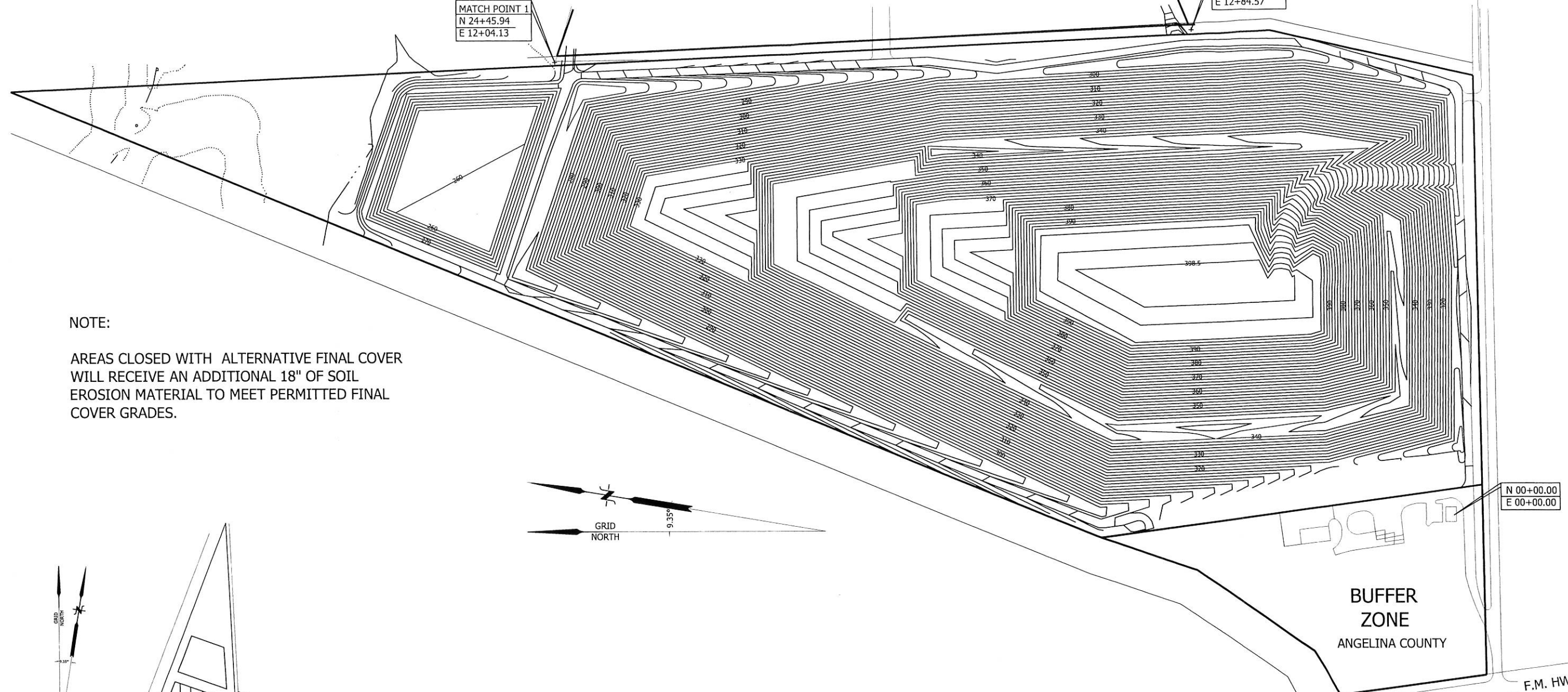
cc: TCEQ Region 10 Office, Beaumont, Texas
Rick Freeman, Everett Griffith Jr. & Associates, Inc.
Chuck Brooks, Manager, Angelina County Waste Management Center

TRACT No. 2 - 56.67 ACRE TRACT

MATCH POINT 2
N 07+08.57
E 12+84.57

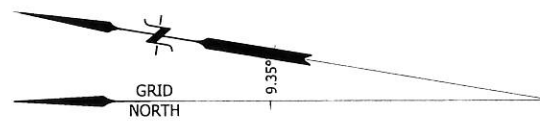
OLD LANDFILL SITE (PERMIT No. 1281)

MATCH POINT 1
N 24+45.94
E 12+04.13



NOTE:

AREAS CLOSED WITH ALTERNATIVE FINAL COVER WILL RECEIVE AN ADDITIONAL 18" OF SOIL EROSION MATERIAL TO MEET PERMITTED FINAL COVER GRADES.

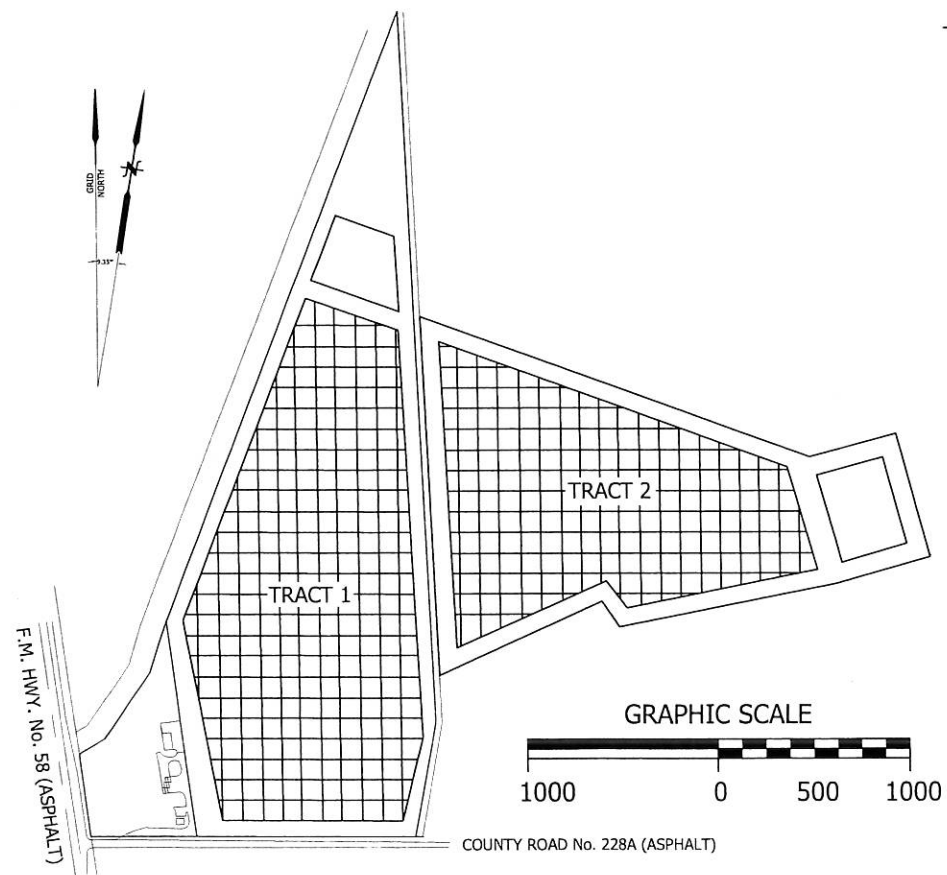
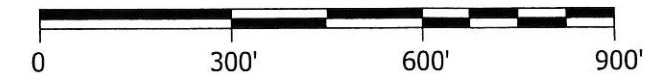


N 00+00.00
E 00+00.00

BUFFER ZONE
ANGELINA COUNTY

F.M. HWY. No. 58

GRAPHIC SCALE



COUNTY ROAD No. 228A (ASPHALT)

KEY MAP



7/15/13

Amy R Hesseltnie
FOR PERMITTING PURPOSES ONLY

NO.	DATE	DESCRIPTION	BY
1	07/15/13	LABEL HIGHEST CONTOUR 398.5'	CMP
1	05/06/13	REVISED CONTOURS TO ORIGINAL	CMP

EXHIBIT 4.5
FINAL CONTOUR MAP
ANGELINA COUNTY
WASTE MANAGEMENT CENTER

 engineers architects contractors <small>TBPE FIRM NO. F-366 WWW.LNVINC.COM</small>	DRAWN BY: CMP
	APPROVED BY: ARH
	DATE: 11-14-11
	SCALE: NTS
	SHEET 1 of 1

130080\p001\dwgs\figs\Final Contours 2013