

IN THE COMMISSIONERS COURT OF

ANGELINA COUNTY, TEXAS

**SUPPLEMENTAL and FINAL ORDER
ADOPTING REVISED POLITICAL
BOUNDARIES FOLLOWING REDISTRICTING OF
COMMISSIONERS COURT PRECINCTS**

BE IT REMEMBERED, that the Commissioners Court of Angelina County, Texas previously adopted a plan for the redistricting of Commissioners Court Precincts on November 12, 2021. Attachment 1. As a consequence of the boundary modifications made by that Order, various changes in the underlying election precincts were required to conform election precinct boundaries to the new Commissioners Court precincts. In addition, the resulting changes to election precincts may have an impact upon the Justice of the Peace Precincts of Angelina County. This Supplemental Order, and the attached maps, data and narrative text, set forth the changes resulting from redistricting of Commissioners Court precincts, and provides an explanation for the necessity of the same.

IT IS THEREFORE ORDERED, ADJUDGED and DECREED that this Supplemental Order, along with all prior Orders of the Commissioners Court, shall be considered as a whole, and this Order shall constitute the FINAL ORDER of the Angelina County Commissioners Court regarding redistricting of all Angelina County political boundaries. To the extent necessary this Order may be supplemented by such attachments and additional data as may be required without the necessity of further action by the Commissioners Court. Legal Counsel for the County, the firm of Allison, Bass & Magee, LLP, is hereby authorized to make such necessary additions to the supporting documentation, descriptions, maps and data charts necessary to comply with the requirements of state or federal law.

This Supplemental Order shall be composed of the following information, which may be supplemented without further order:

1. Maps of the four statutory Commissioners Court precincts and:
 - i. Identification of constituent election precincts that make up each Commissioners Court precinct, and
 - ii. Demographic charts reflecting the population and racial/ethnicity for each Commissioners Court precinct.

See Attachment 2.

2. Map(s) of each Justice of the Peace Precinct, and:
 - i. Identification of constituent election precincts that make up each Justice of the Peace precinct.

See Attachment 3.

3. Map(s) of Election Precincts, and
 - i. A narrative description of the boundary changes of election precincts, and/or a list of census blocks included therein.

See Attachment 4.

4. If necessary, a narrative explanation of any other condition or circumstance relevant to the redistricting of Angelina County political boundaries.

5. Sections 42.005, 42.0051, 42.006 and 42.007 of the Texas Election Code contain various provisions related to the creation of election precincts. The Commissioners Court of Angelina County, Texas hereby recognizes that in some cases, the provisions of Section 42.007 are impracticable, in that portions of the municipal ward lines contain little or no population, and that as stand-alone entities, such areas cannot constitute a separate election precinct of suitable size or shape that contains a permissible number of voters or cannot be combined with other territory on the same side of a political boundary to form an election precinct of a suitable size or shape without causing another election precinct to fail to meet those same requirement. This Order recognizes that where such conditions exist, the office performing the administration of elections is given discretion to allocate territory in such a manner as to obtain substantial compliance with the applicable statutes.

6. **Notice of Availability: A copy of the entire redistricting plan shall be available for inspection by the public during regular business hours in the office of the County Clerk, or on the county website.**

To the extent that any of the foregoing revised election precincts contain territory inside a city with unincorporated territory outside of the affected city, the Commissioners Court, pursuant to §42.007 (1) and (2), finds that either of the two areas (within and without the incorporated city) cannot constitute a separate election precinct of suitable size or shape that contains the permissible number of voters, or cannot be combined with other territory on the same side of the city boundary to form an election precinct of a suitable size or shape that contains the permissible number of voters without causing another election precinct to fail to meet those requirements. The Commissioners Court delegates sufficient discretion to the office performing the administration of elections to make such boundary adjustment to said election precincts to facilitate the effective administration of elections, and to pose the least inconvenience to the voters of the affected election precincts.

The above and foregoing changes to Election Precincts shall take effect January 1, 2022, and will remain in effect until changes by further Order of this Commissioners Court.

IT IS THEREFORE ORDERED, ADJUDGED AND DECREED that the Redistricting Plan depicted in the maps and data attached to this Order are hereby APPROVED and ADOPTED by the Commissioners Court of Angelina County, Texas. This Final Order and Plan adopted by this Order shall be effective for the 2022 general primary election, and for all subsequent elections until changed or modified by later Order.

Signed this 28th day of December, 2021.

Raydon C. Lemke
County Judge, Angelina County

[Signature]
Commissioner, Precinct 1

Kenneth Kennedy
Commissioner, Precinct 2

Tommy Pitts
Commissioner, Precinct 3

[Signature]
Commissioner, Precinct 4

ATTEST:

Amy Fisher
County Clerk, Ex Officio Clerk of the
Angelina County Commissioners Court



**THE STATE OF TEXAS
COUNTY OF ANGELINA**

Commissioners Court met in Special Session on Friday, November 12, 2021 at 9:00 A.M. at the Angelina County Courthouse Annex, Commissioners' Courtroom, 606 East Lufkin Avenue, Lufkin, Texas with the following members present:

Don Lymbery	County Judge
Rodney Paulette	Commissioner Precinct #1
Kermit Kennedy	Commissioner Precinct #2
Terry Pitts	Commissioner Precinct #3
Steve Smith	Commissioner Precinct #4

1. Judge Don Lymbery called the meeting to order at 9:00 A.M. with all members present.
2. Opening prayer by Commissioner Terry Pitts.
3. Pledge of Allegiance to the Flag of the United States of America and to the Flag of the State of Texas.
4. Rodney Paulette made a motion to approve the Canvass of Votes for the November 2, 2021 Constitutional Amendments. Kermit Kennedy seconded the motion.
Voted For: Rodney Paulette, Kermit Kennedy, Terry Pitts and Steve Smith
Voted Against: (None)
Motion carried.
5. The Court opened a Public Hearing at 9:12 A.M. regarding the redistricting of the Commissioners Court Precincts. The proposed changes were explained. Mike Parker requested that the changes be published in the Lufkin Daily News. Elizabeth Hawkins, Elections Administrator, discussed that there will be changes in the voting precincts.
6. The Public Hearing was closed at 9:18 A.M.
7. Rodney Paulette made a motion to accept the proposed changes for the redistricting of County Commissioner Court precincts, political boundaries and new boundaries for the Commissioners Court precincts. Terry Pitts seconded the motion.
Voted For: Rodney Paulette, Kermit Kennedy, Terry Pitts and Steve Smith
Voted Against: (None)
Motion carried.
8. Kermit Kennedy made a motion to adjourn at 9:20 A.M. Rodney Paulette seconded the motion.
Voted For: Rodney Paulette, Kermit Kennedy, Terry Pitts and Steve Smith
Voted Against: (None)
Motion carried.

I, Amy Fincher, Angelina County Clerk, do hereby attest to the accuracy of the Commissioners' Court Minutes for November 12, 2021 on this 12th day of November, 2021.



Amy Fincher
Amy Fincher, Angelina County Clerk

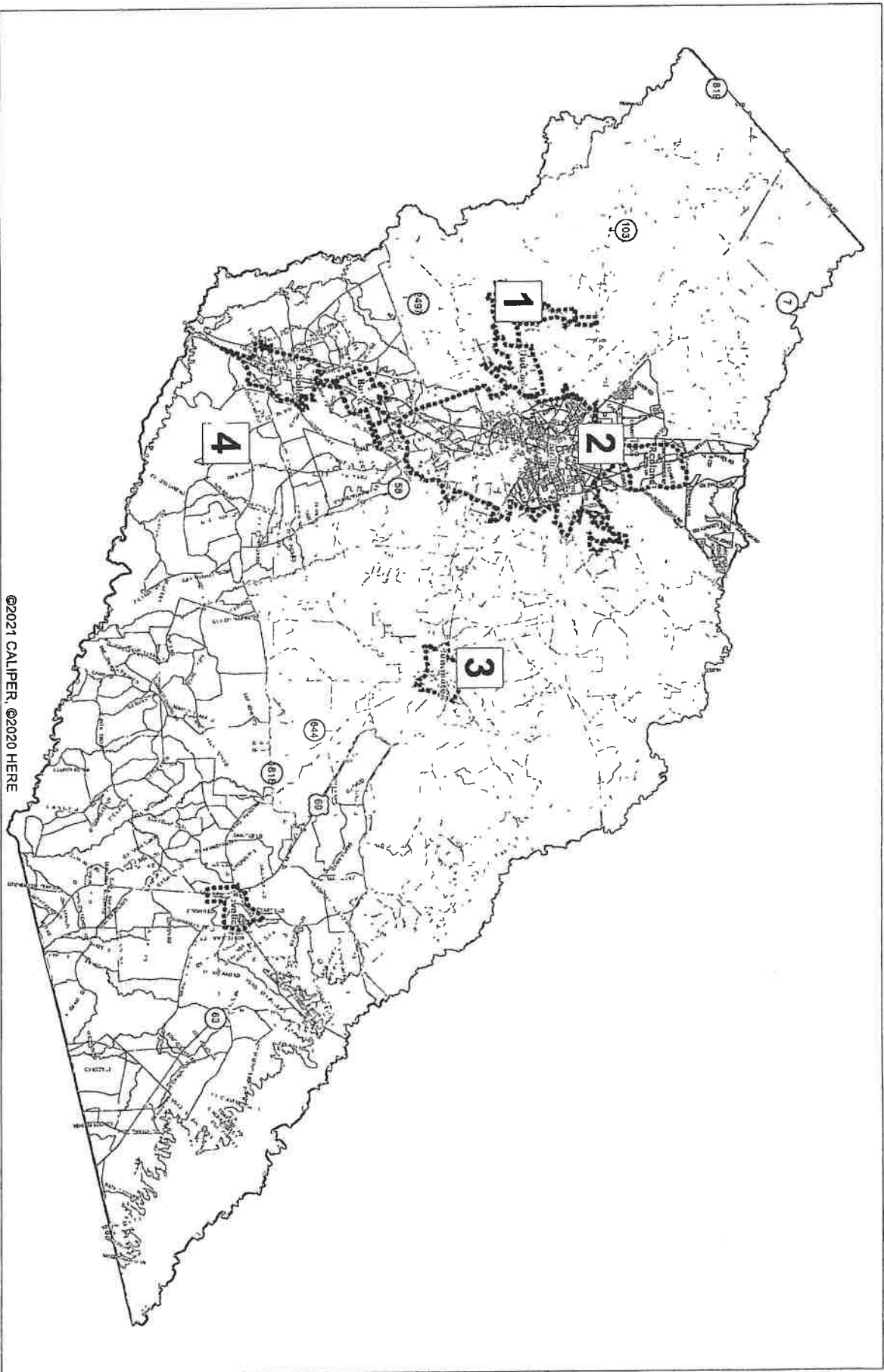
Commissioners Court Precinct 1 consists of the following County election precincts:
6, 7, 8, 19, 22, 23, 24, 25, 29 and 39

Commissioners Court Precinct 2 consists of the following County election precincts:
2, 4, 5, 10, 20 and 21

Commissioners Court Precinct 3 consists of the following County election precincts:
1, 3, 11, 11B, 12, 26, 30, 33, 35, 37 and 40

Commissioners Court Precinct 4 consists of the following County election precincts:
9, 13, 14, 15, 16, 17, 17B, 18, 27, 28, 31, 32, 34 and 38

In order for County Election Precincts to conform to the newly revised and adopted boundaries of the four Commissioners Court Precincts and the existing Justice of the Peace/Constable Precincts, a minor revision to the adopted plan was required between Commissioners Precincts 1 and 2. The additional revision was necessitated by the need for Justice of the Peace/Constable Precinct 2 to have their offices located within their precinct. Election Precinct 36 was moved from Commissioner Precinct 2 into Commissioner Precinct 1 which effected population of 2 registered voters.



©2021 CALIPER, ©2020 HERE

- Commissioner Precinct 1
- Commissioner Precinct 2
- Commissioner Precinct 3
- Commissioner Precinct 4

Angelina County Commissioner Precincts

Allison, Bass & Magee, LLP
Data Source: 2020 Census





- Commissioner Precinct 1
- Commissioner Precinct 2
- Commissioner Precinct 3
- Commissioner Precinct 4

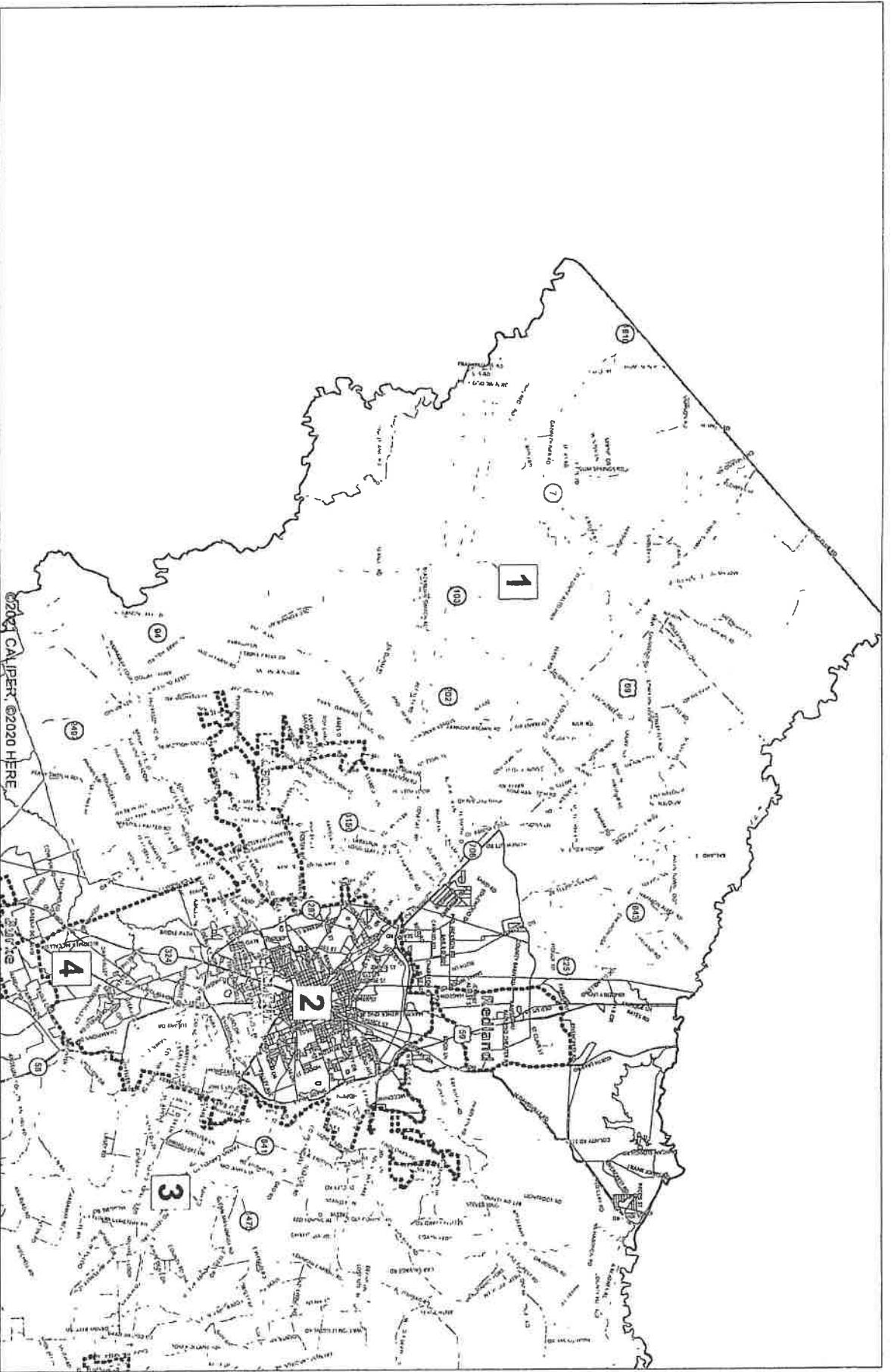
Angellina County

Lufkin

Commissioner Precincts

Allison, Bass & Magee, LLP
Data Source: 2020 Census





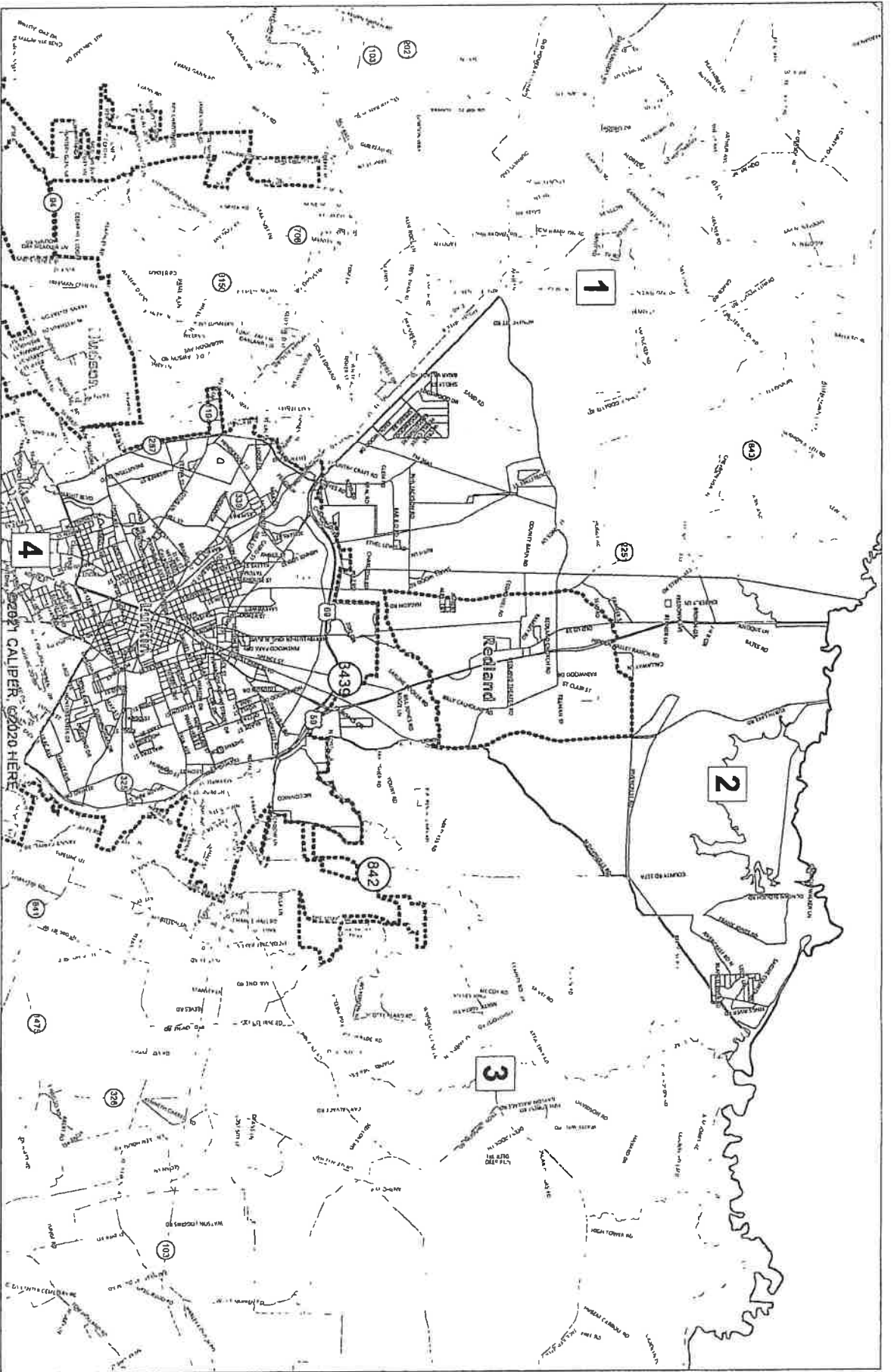
- Commissioner Precinct 1
- Commissioner Precinct 2
- Commissioner Precinct 3
- Commissioner Precinct 4

Angelina County

Commissioner Precinct 1

Allison, Bass & Magee, LLP
 Data Source: 2020 Census





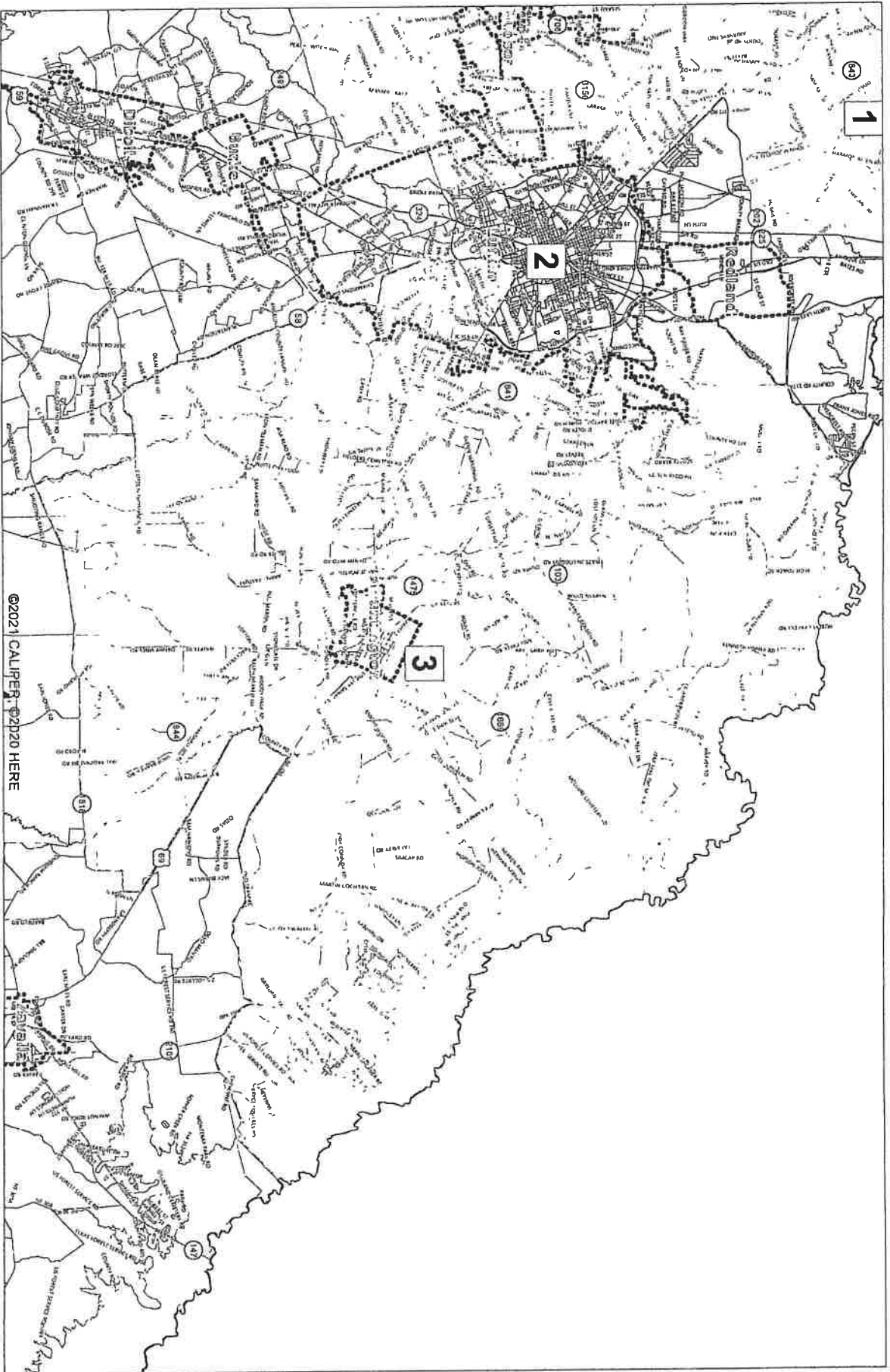
- Commissioner Precinct 1
- Commissioner Precinct 2
- Commissioner Precinct 3
- Commissioner Precinct 4

Angeline County

Commissioner Precinct 2

Allison, Bass & Magee, LLP
 Data Source: 2020 Census





1

2

3

©2021 CALIPER-02120 HERE

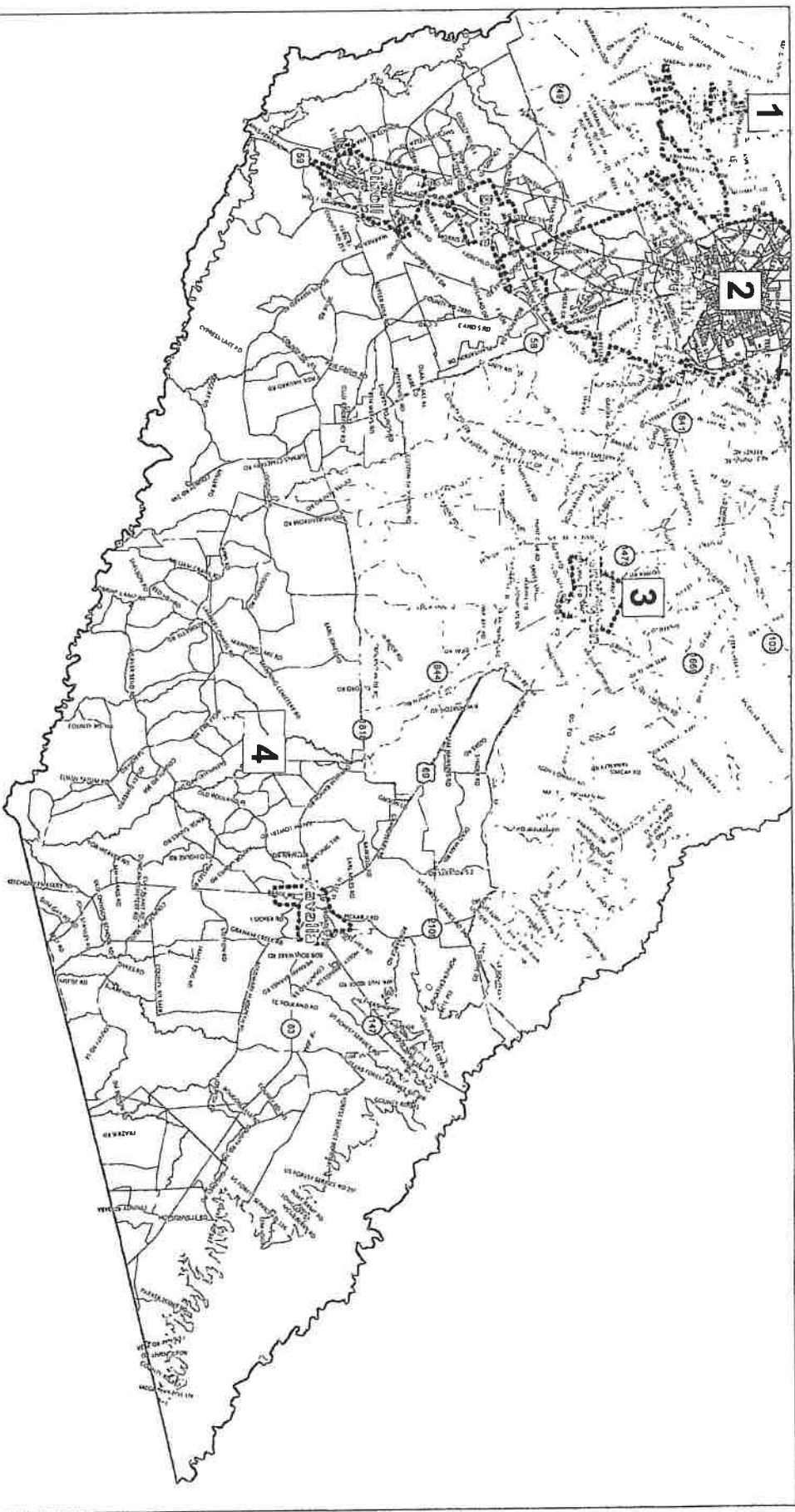
- Commissioner Precinct 1
- Commissioner Precinct 2
- Commissioner Precinct 3
- Commissioner Precinct 4

Angelina County

Commissioner Precinct 3

Allison, Bass & Magee, LLP
Data Source 2020 Census





©2021 CALIPER, ©2020 HERE

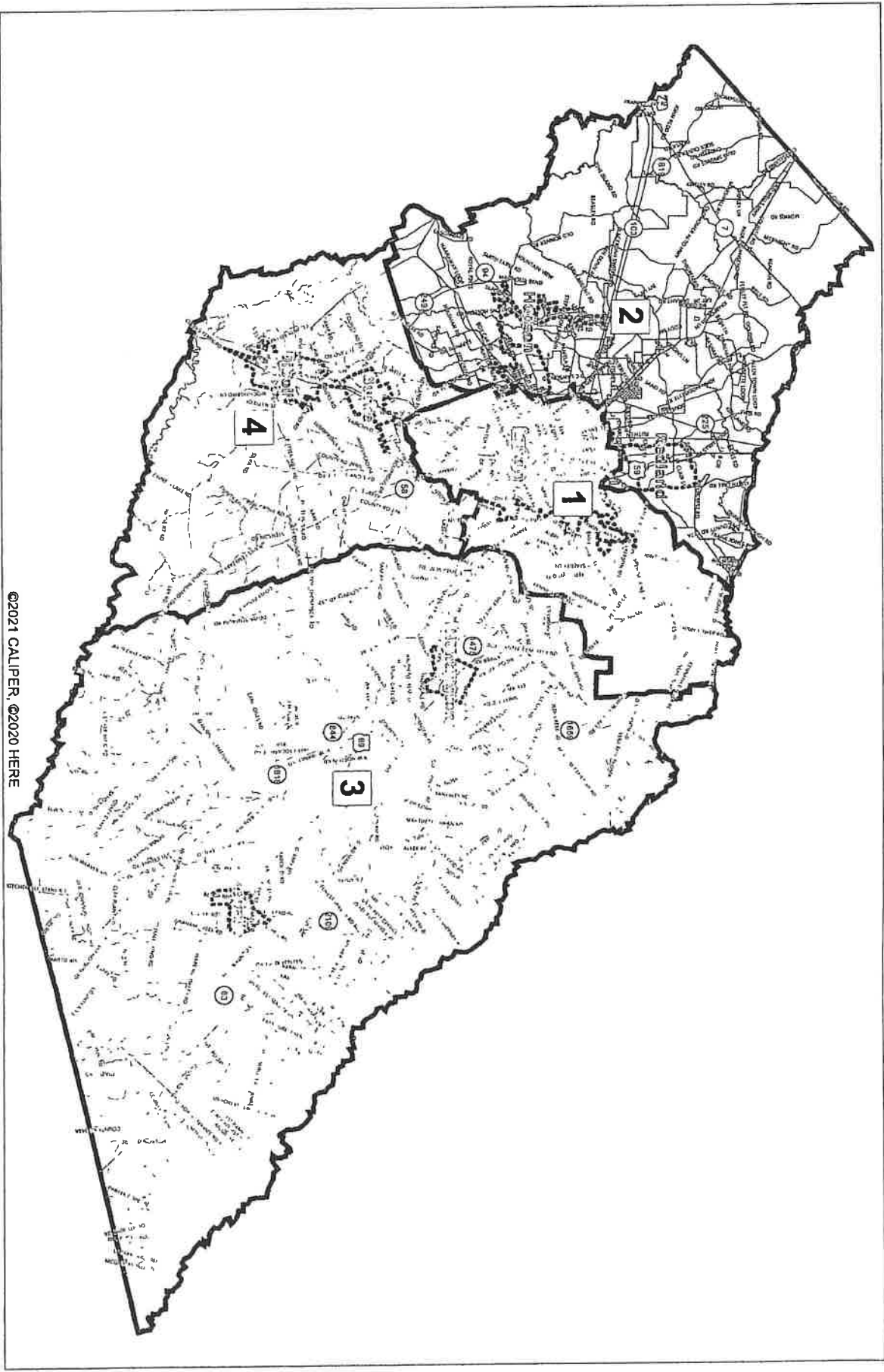
- Commissioner Precinct 1
- Commissioner Precinct 2
- Commissioner Precinct 3
- Commissioner Precinct 4

Angelina County

Commissioner Precinct 4

Allison, Bass & Magee, LLP
 Data Source: 2020 Census





©2021 CALIPER, ©2020 HERE

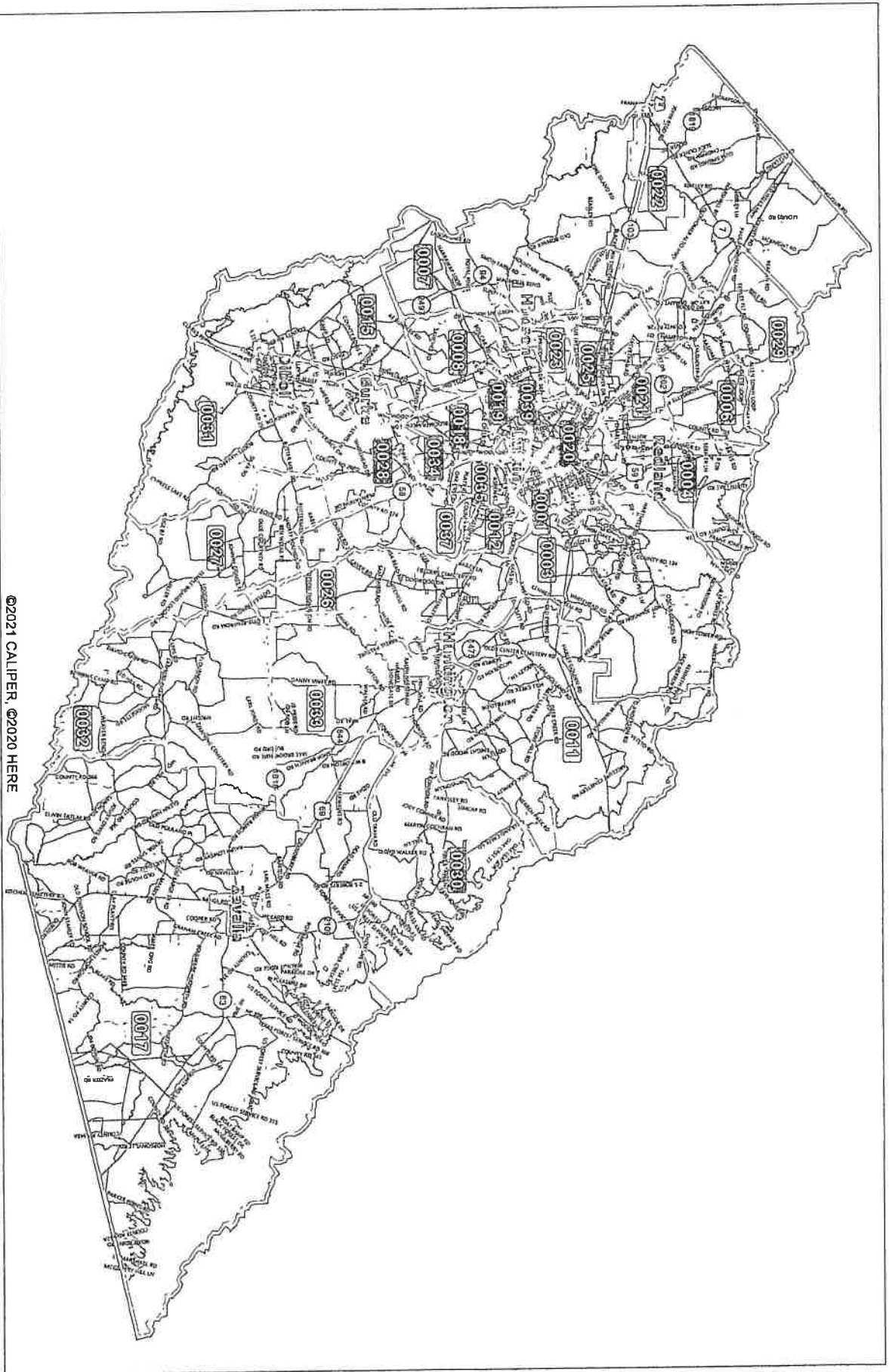
- JP Precinct 1
- JP Precinct 2
- JP Precinct 3
- JP Precinct 4

Angelina County

JP Precincts

Allison, Bass & Magee, LLP
Data Source: 2020 Census





©2021 CALIPER, ©2020 HERE

0001	0002	0003	0004	0005	0006
0007	0008	0009	0010	0011	0011B
0012	0013	0014	0015	0016	0017
0017B	0018	0019	0020	0021	0022
0023	0024	0025	0026	0027	0028
0029	0030	0031	0032	0033	0034
0035	0037	0038	0039	0040	

Angelina County

Voting Districts

Allison, Bass & Magee, LLP
Data Source: 2020 Census



